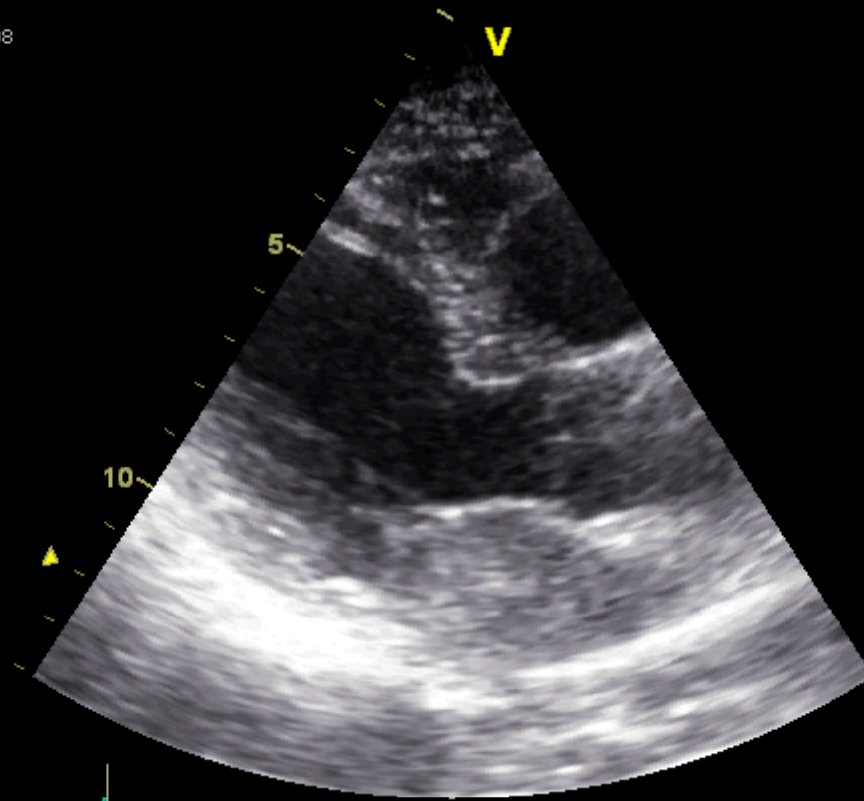


MIXOMA AI. UTILIDAD DE CT

Virginia Álvarez Asiain, Raúl Ramallal Martínez. Gema Lacuey Lecumberri. Servicio de Cardiología Hospital de Navarra.

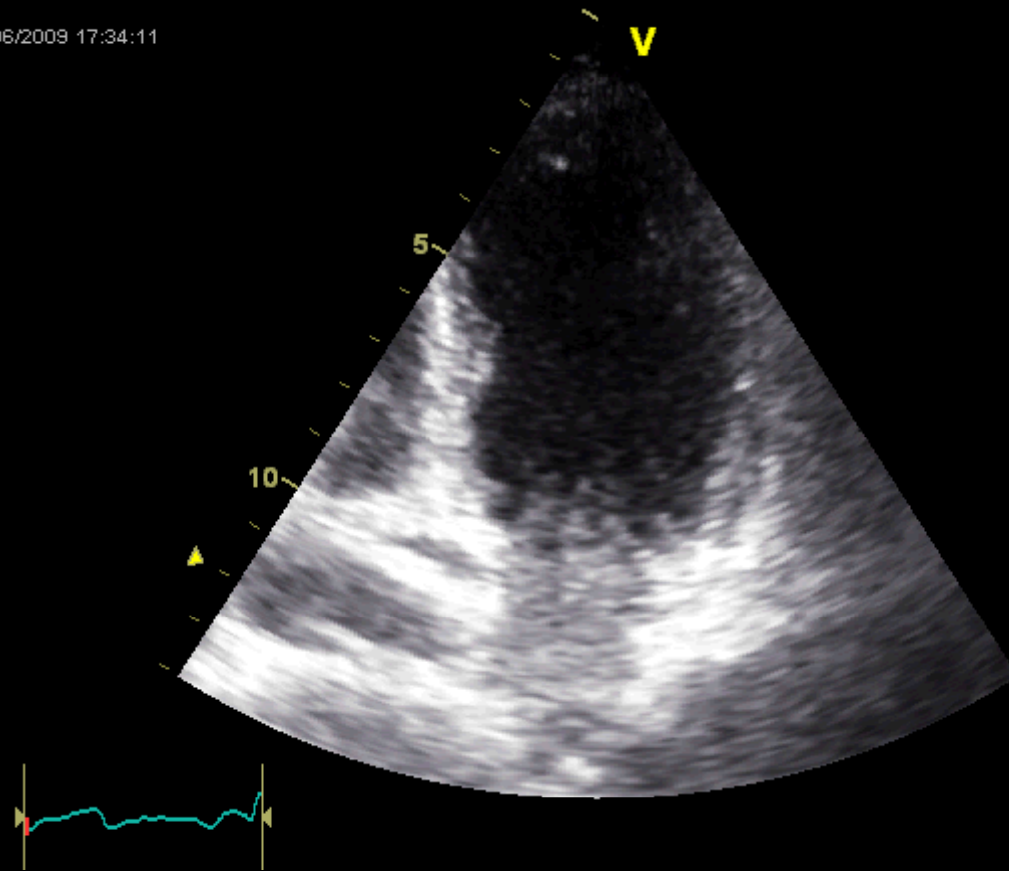
Saioa Solchaga. Mercedes Ciríza Esandi. Servicio de Radiodiagnóstico. Hospital de Navarra.

04/06/2009 17:29:08



43
4:70 HR

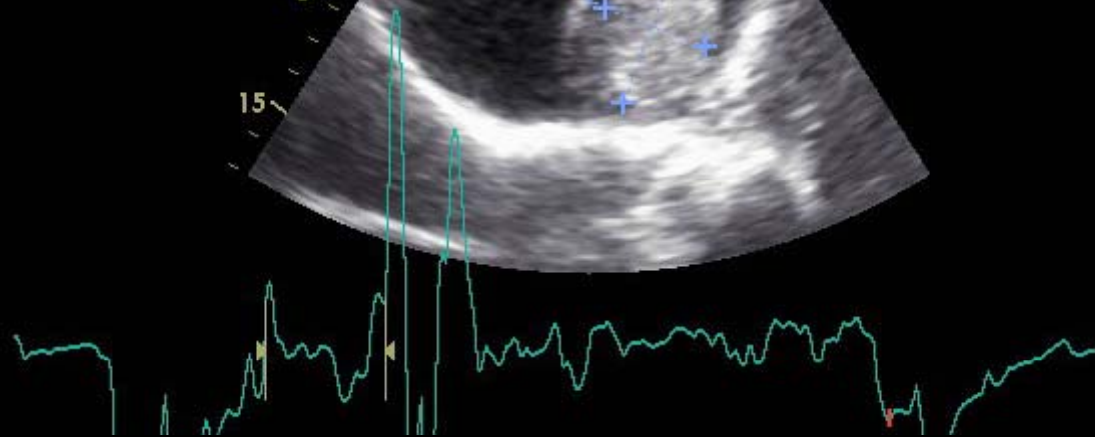
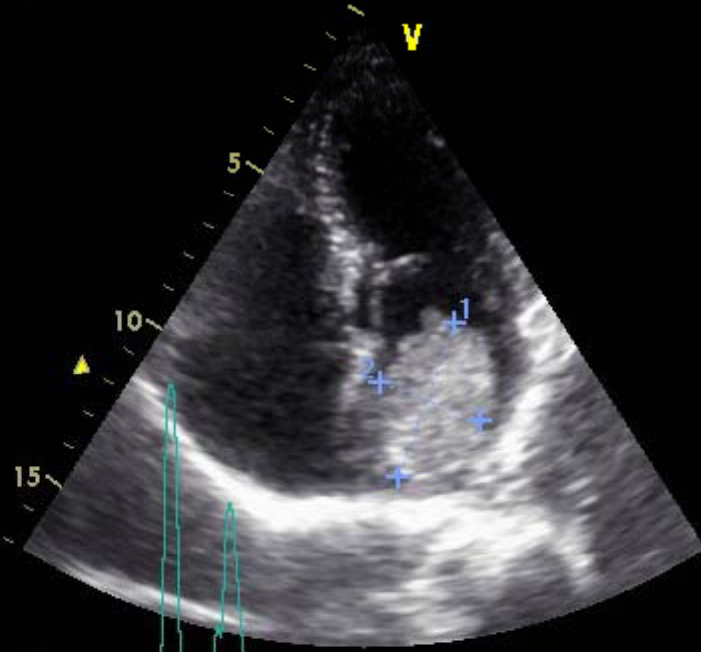
04/06/2009 17:34:11



36
5:74 HR

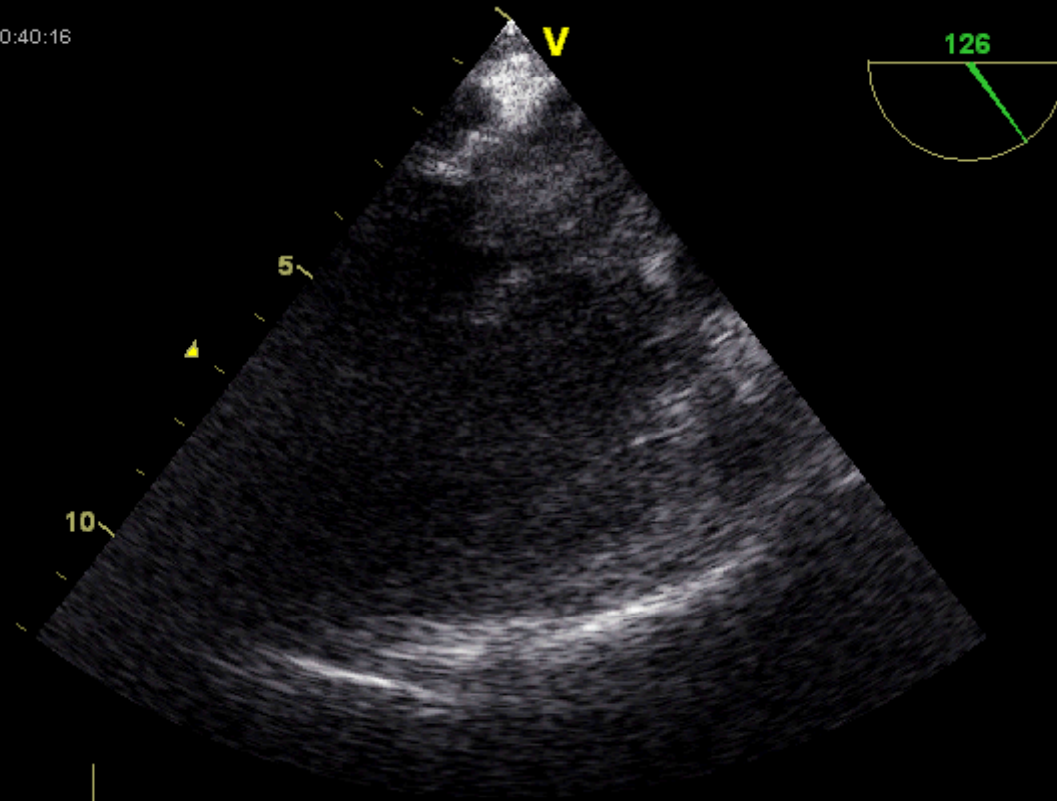
●	3.4 MHz
2 L	2.9 cm
1 L	4.4 cm

3.4 MHz



56
HR

05/06/2009 10:40:16



104
5:42 HR

Z 1,00

RA

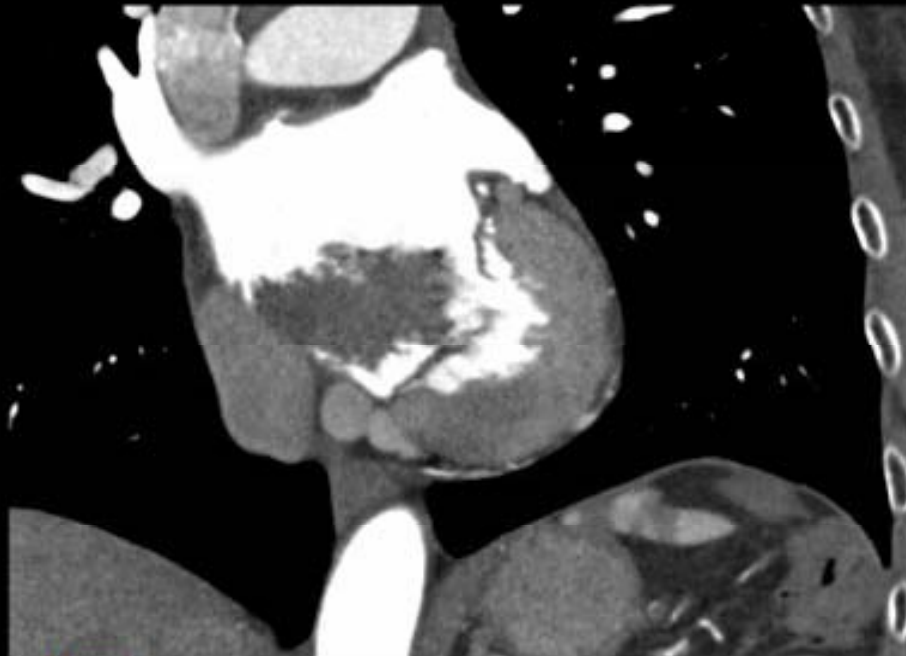


PHILIPS

AFL

Z 1,00

R



R
A
F

PHILIPS

F

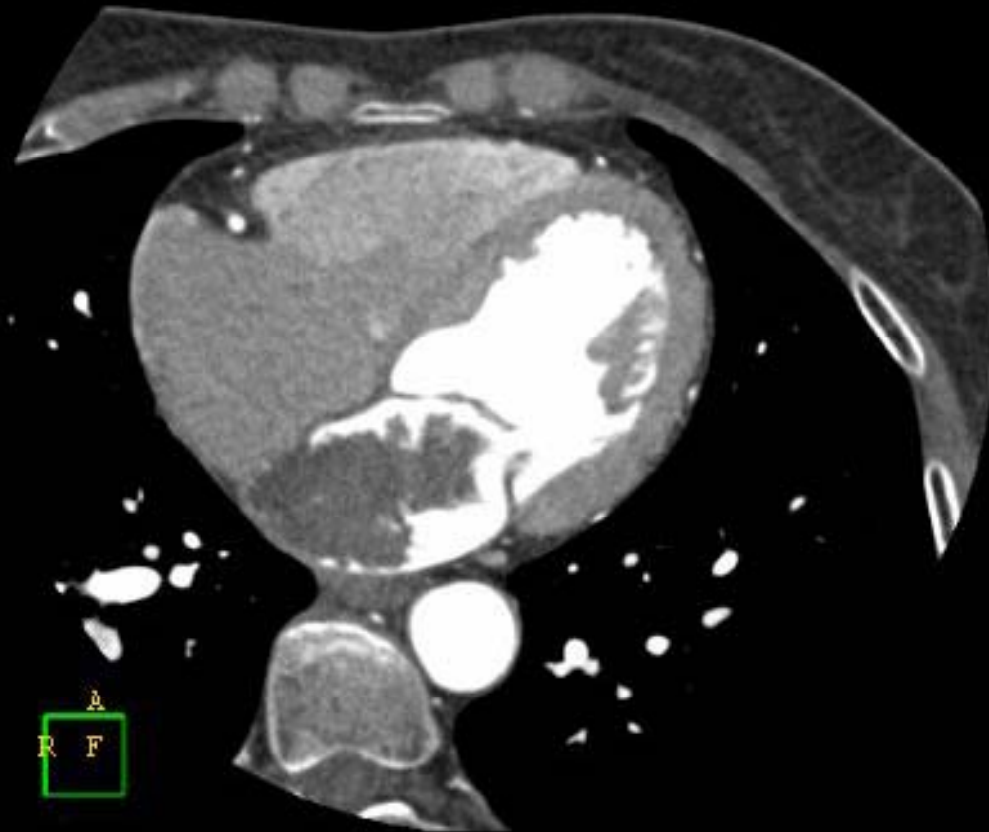
Z 1,00

R

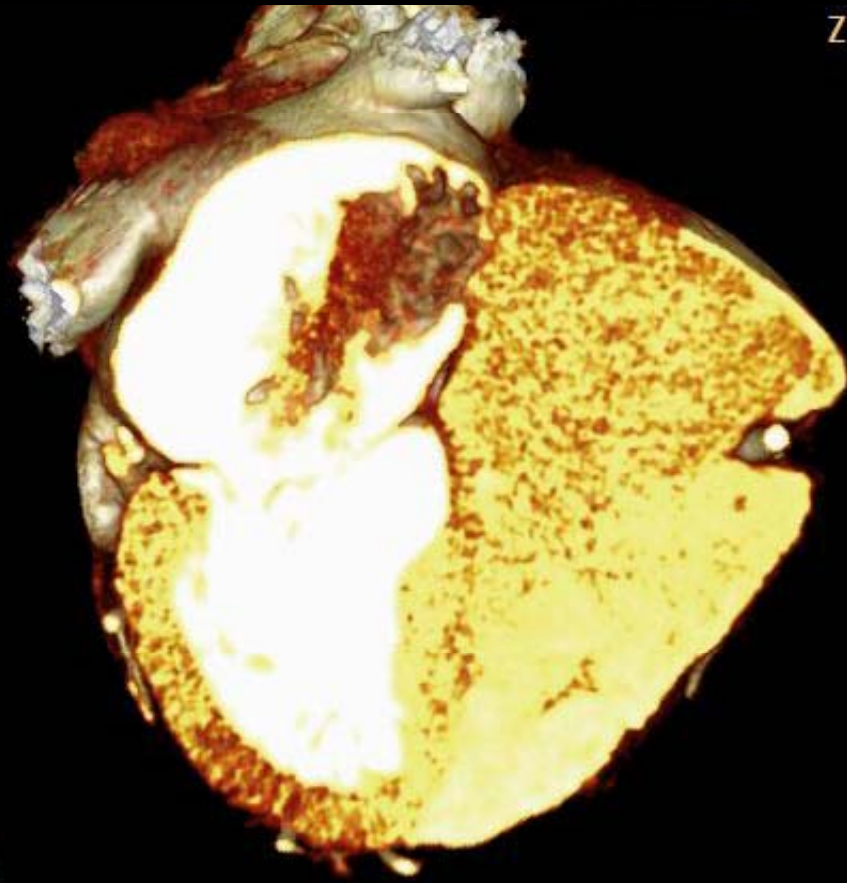
A
R F

PHILIPS

P



Z 1,00

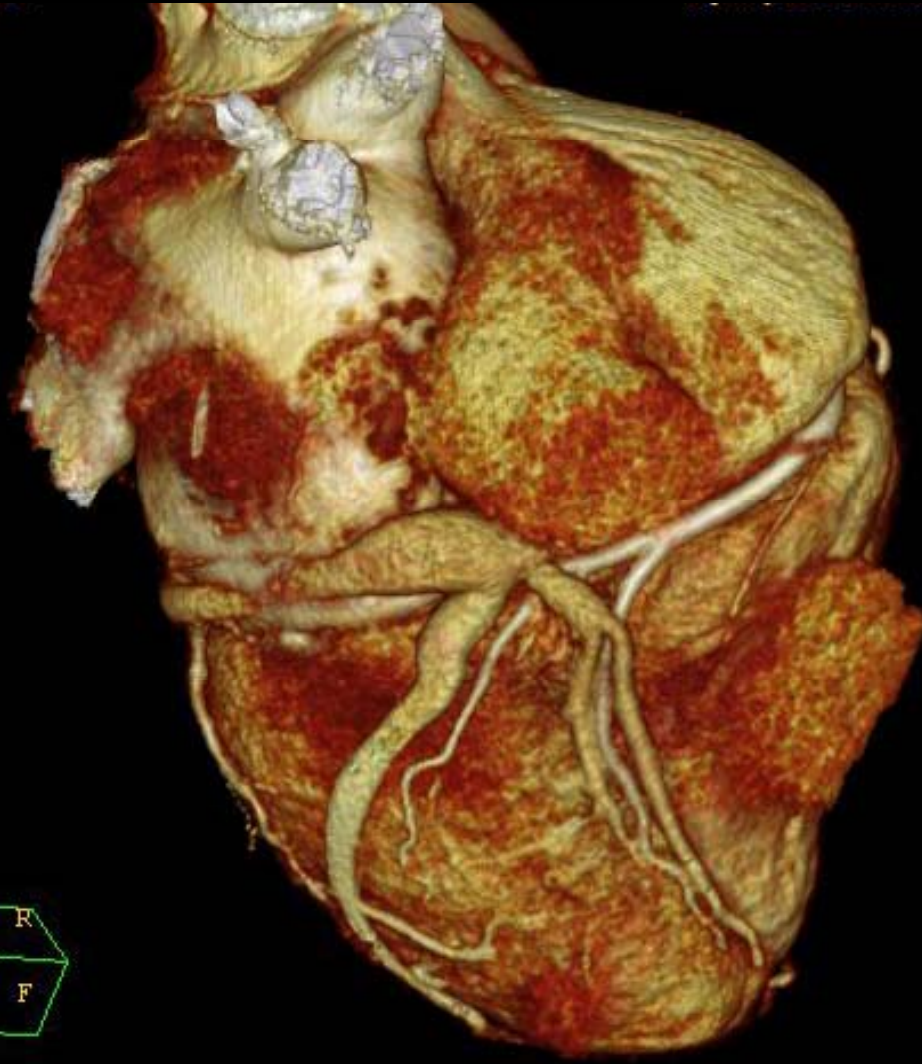


PHILIPS

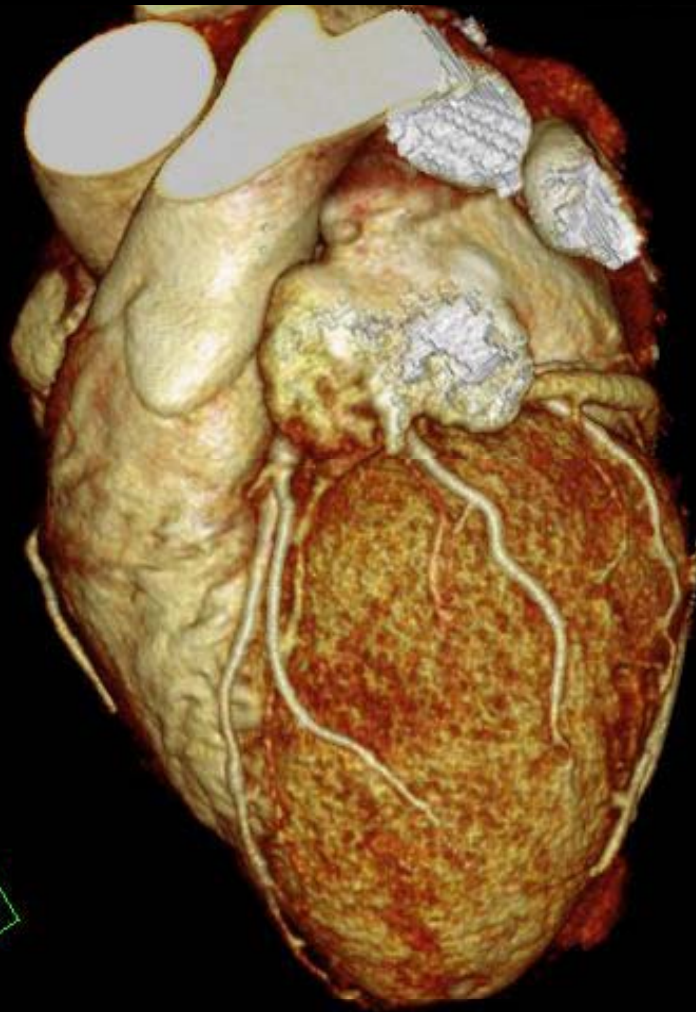
Z 1,00



PHILIPS



Z 1,00



PHILIPS

Z 1,00



PHILIPS

Z 1,00

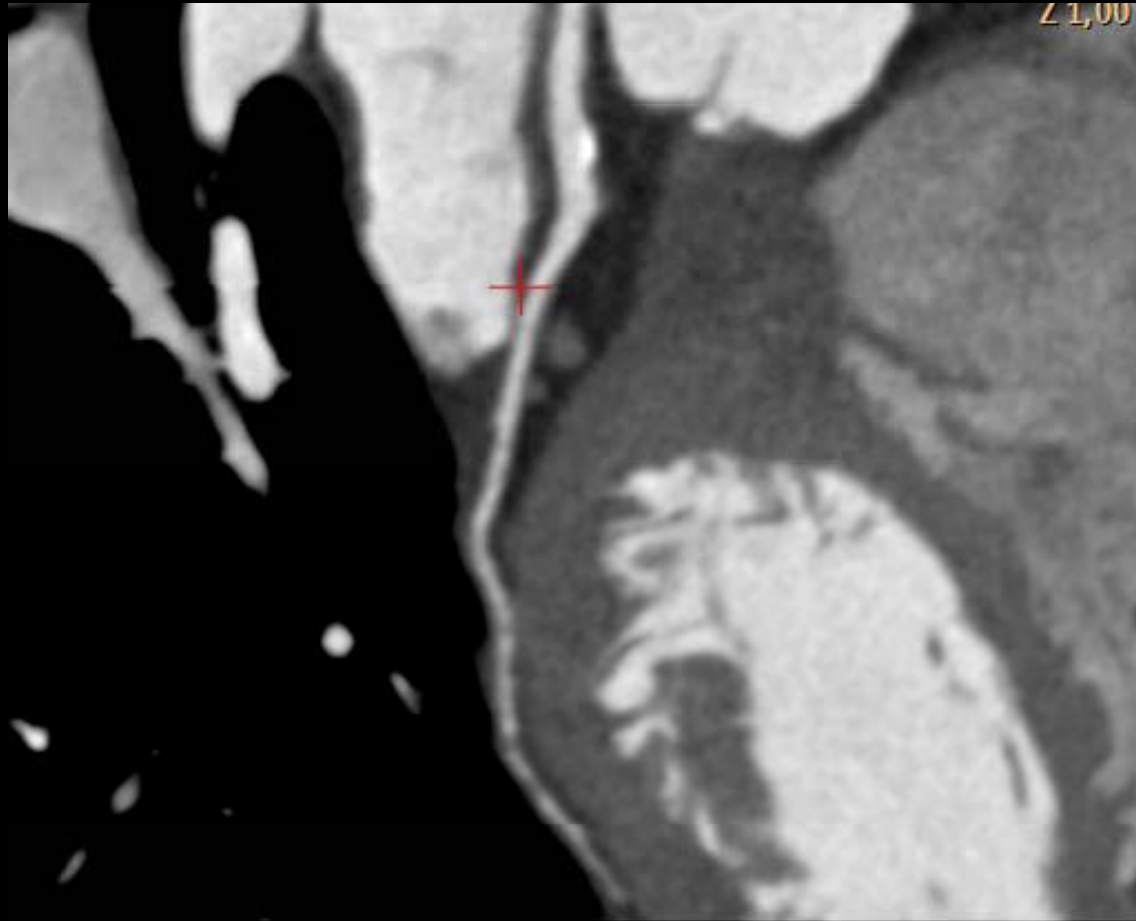


PHILIPS

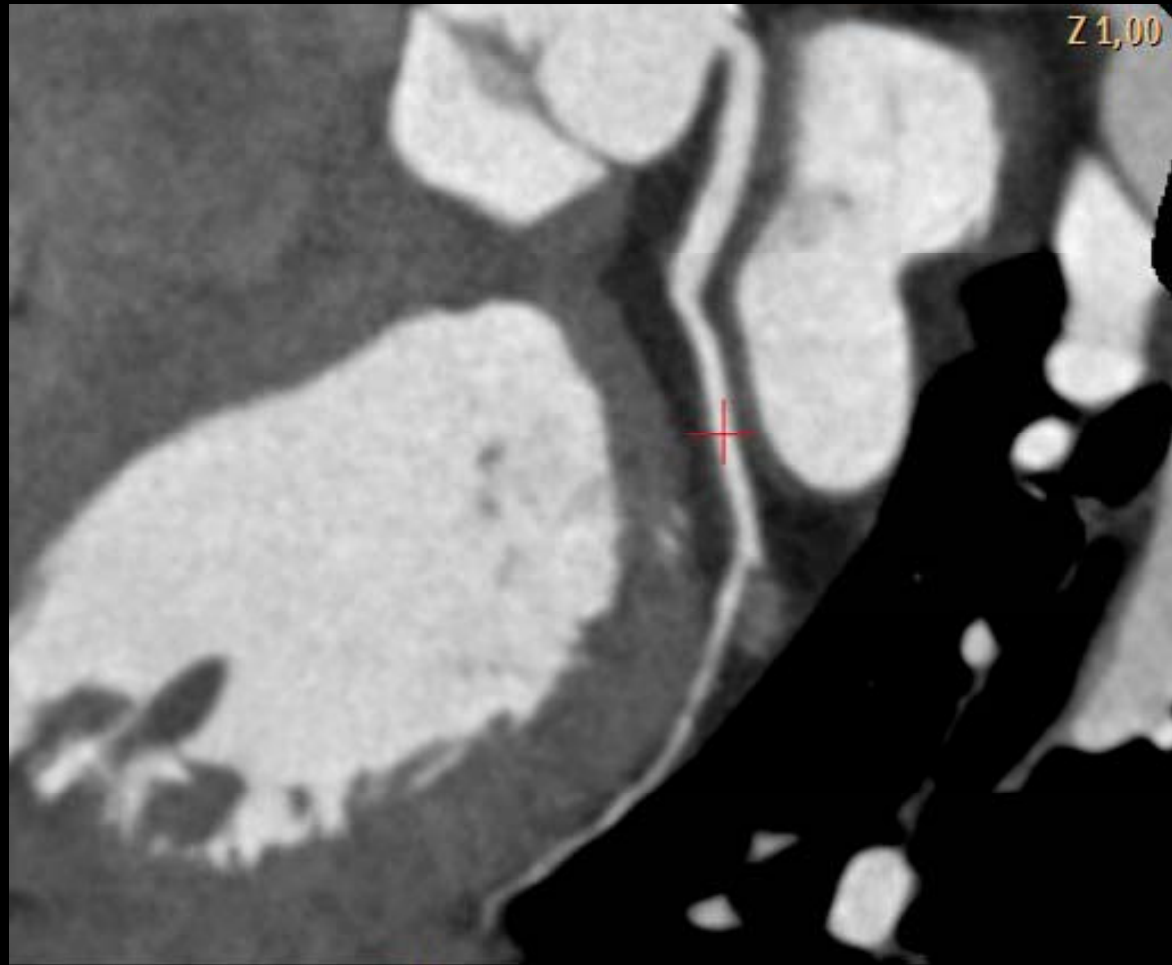
L 1,00



PHILIPS



PHILIPS

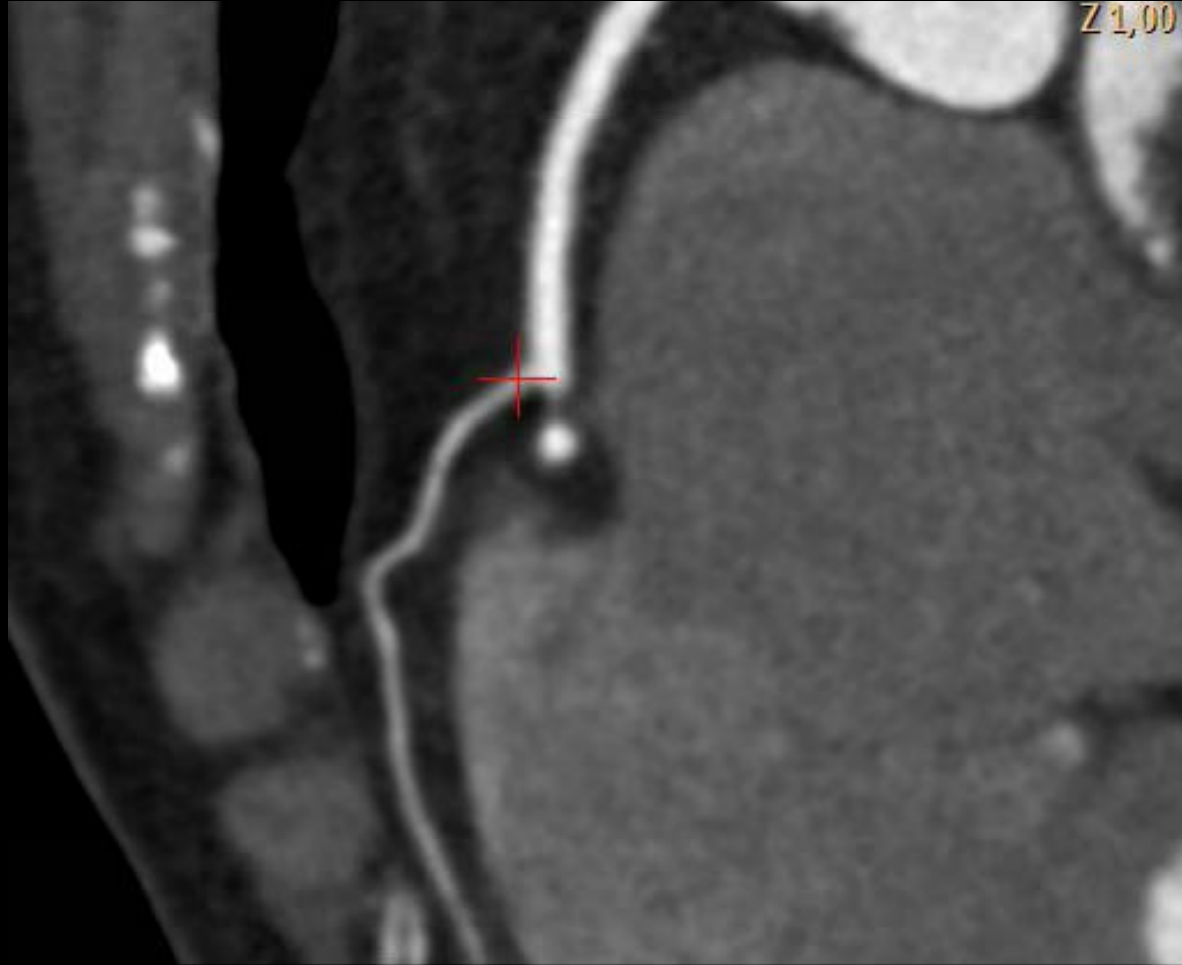


Z 1,00

PHILIPS

CXI

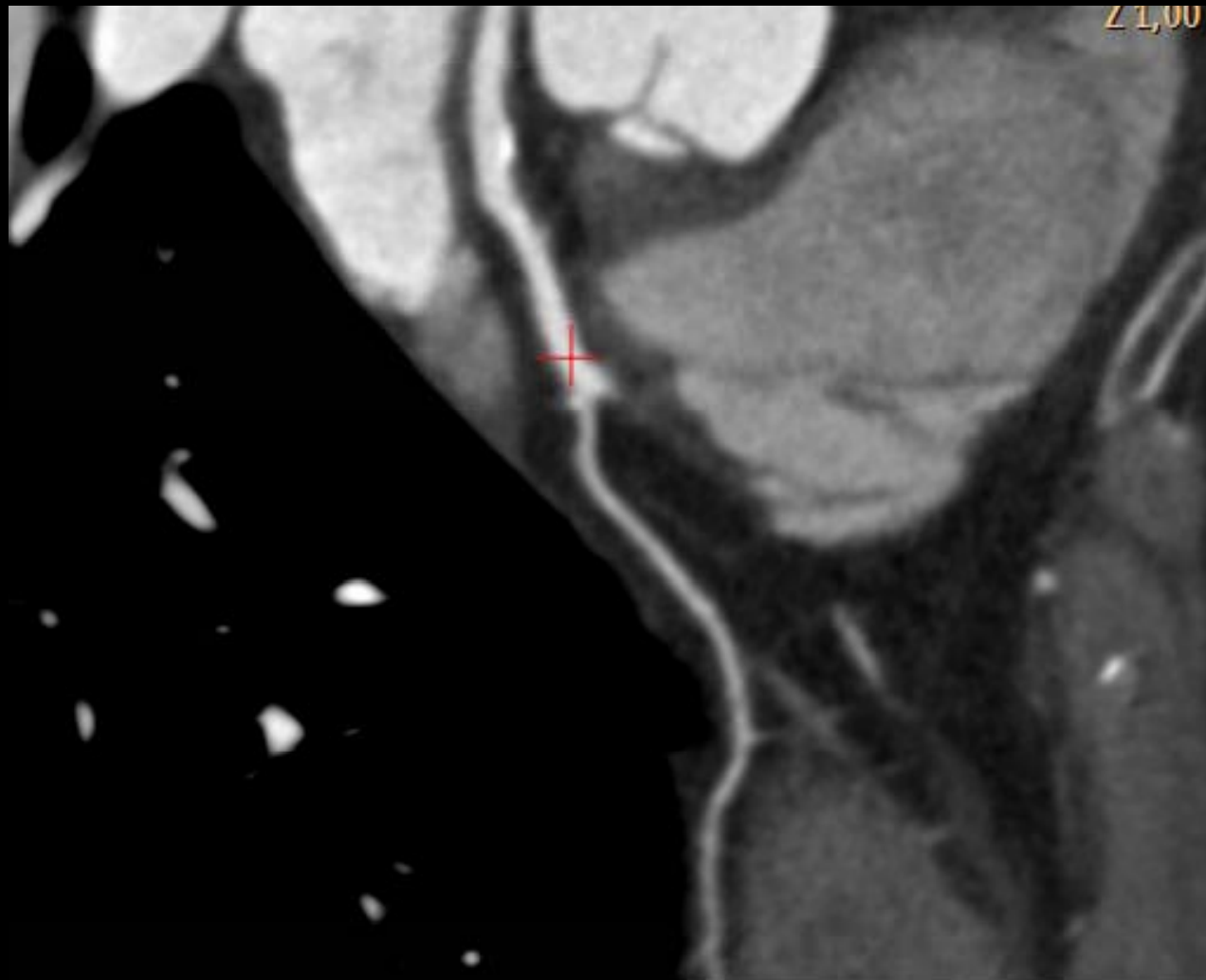




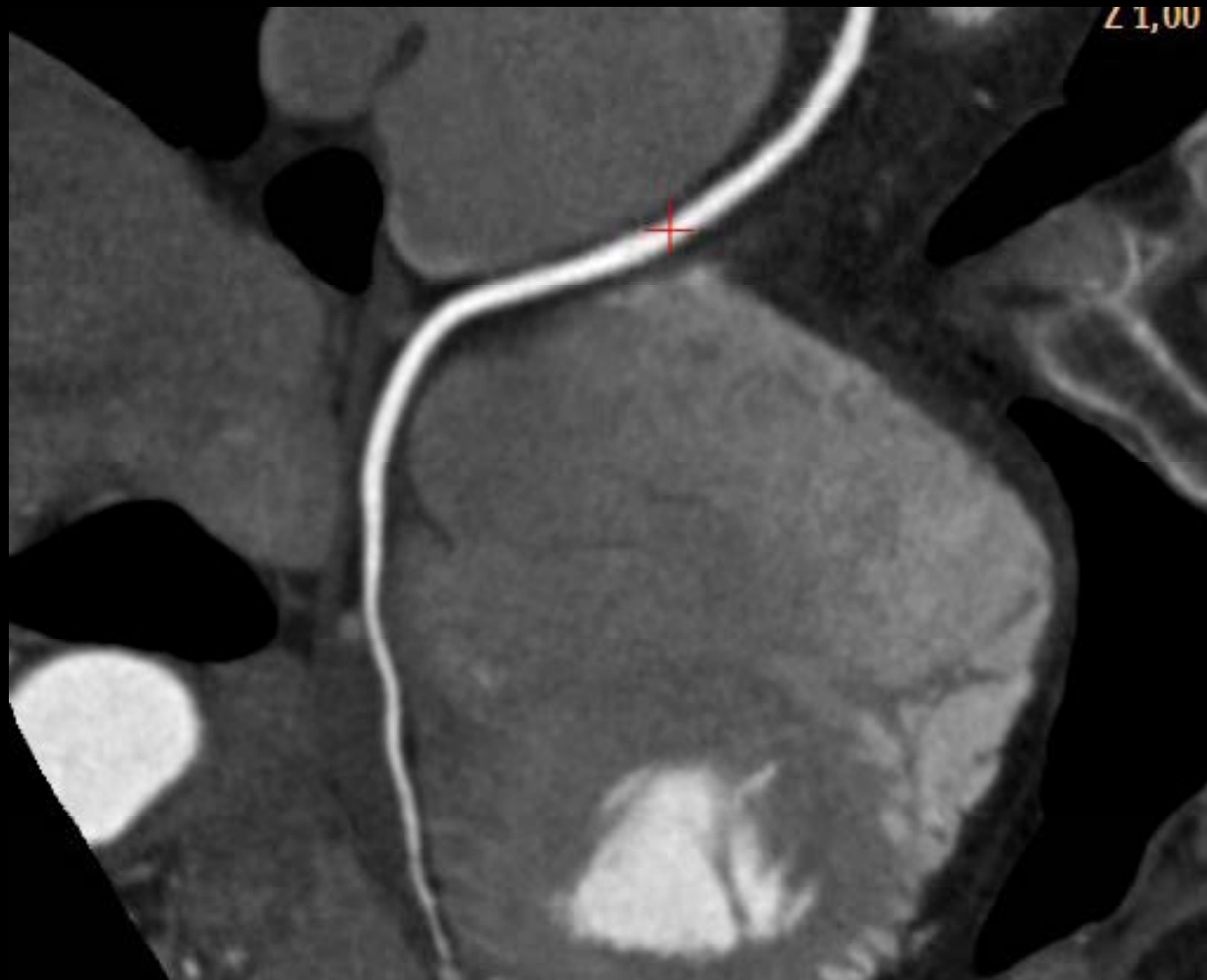
PHILIPS



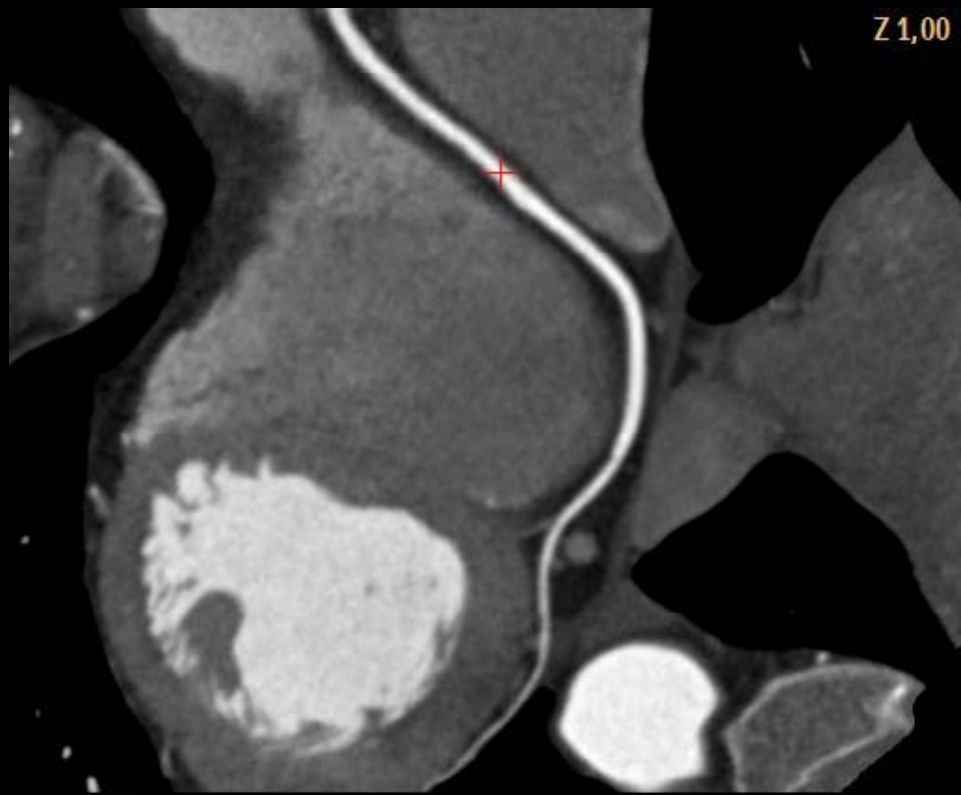
PHILIPS



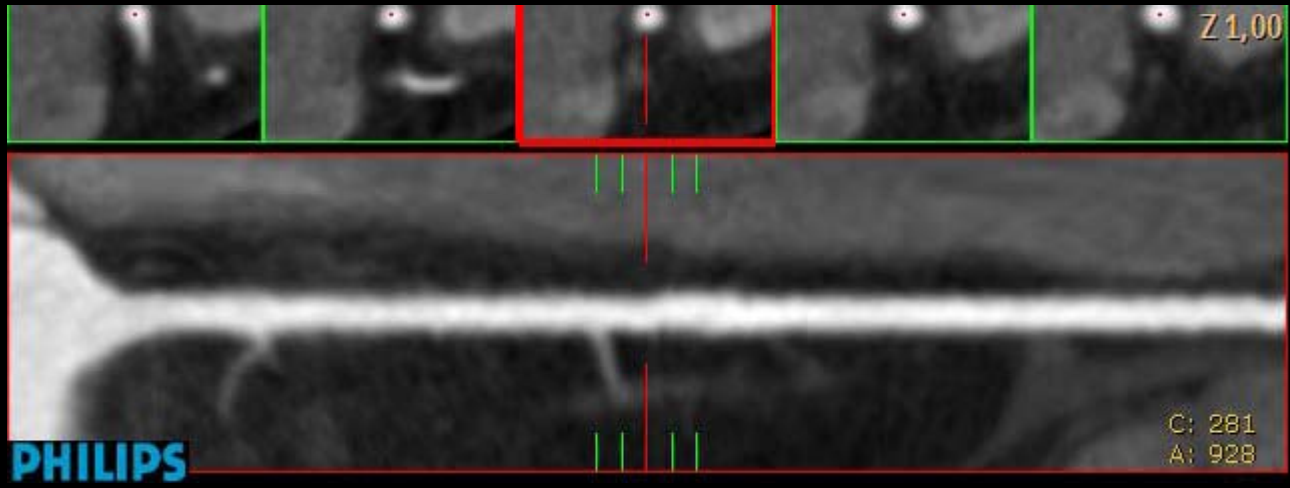
PHILIPS



PHILIPS



PHILIPS



- En la actualidad, el CT cardiaco es una técnica con un VPN muy alto, para la valoración de las arterias coronarias, en pacientes de bajo riesgo ,que van a ser sometidos a CEC , evitando realizar estudios invasivos

